





PUBLIC SPACE NOW

●●mmcité

THE MMSITÉ TEAM



HEAD IN THE CLOUDS

**DESIGNING AND CREATING.
INSPIRING.
FOR CITIES AND PEOPLE.
WITHOUT DISTINCTION.**

We value our cities. That's why we beautify them with a team of designers from around the world. Don't look for the shortest way—live outside.

A person wearing a dark t-shirt, shorts, and work boots stands in a wood mill. A large, dense cloud of sawdust falls from above, partially obscuring the person. In the background, there are stacks of processed lumber. The scene is lit with a cool, blueish light.

HEAD IN THE CLOUDS

**CUT, MILL, GRIND.
SHAPE AND SERVE FOR YEARS.
AGE BEAUTIFULLY.**

Wood is an unmatched renewable material. It ages beautifully and, with proper maintenance, lasts for decades. Our timber is offered with FSC certification, which guarantees controlled logging and necessary forest regeneration.



HEAVY METAL

**WIND AND RAIN, HUMIDITY
AND FROST, SUNSHINE AND
WEIGHTLESSNESS.
BLAST, PROTECT, PAINT.
ENDURE FOR YEARS.**

All metal parts of our products are carefully treated to endure not only extreme conditions but also the daily life and hustle of the city.



JUST THE BEST

**MANUFACTURE AND INSPECT.
ALL PARTS, EVERY DETAIL.**

Thanks to a multi-stage control system, only the best pieces of street furniture make it to public spaces.



A WOODWORKING BLAST

**MACHINE AND HANDCRAFTED.
ALWAYS PRECISE.**

Nearly no wood waste. New
products from scraps. Briquettes
from the smallest pieces.
Circulation, upcycling, recycling.

A woman with long blonde hair, wearing a dark polka-dot dress and a green jacket, stands on a cobblestone path. She is holding a red metal shopping basket and a red rope. In front of her are two wooden tables with black conical bases, each mounted on a black skateboard with wheels. The path is surrounded by lush green trees and bushes. The text "SHIPPING LEFT, SHIPPING RIGHT" is overlaid in large, bold, orange letters.

**SHIPPING LEFT,
SHIPPING RIGHT**

**FROM THE CZECH REPUBLIC
TO THE ENTIRE WORLD.
BY AIR AND BY SEA.
SAFELY AND EFFICIENTLY.**

We deliver our products worldwide.
We always strive to optimize
transport costs and carbon
footprint. We adapt our packaging
to reflect this.

A woman with dark curly hair, wearing a dark blue t-shirt and light blue jeans, is jumping over a blue-painted wooden bench in a park. She is holding up several white shopping bags with orange patterns. The background is a lush green park with trees and a path. The text "WE SELL WHAT CITIES LOVE" is overlaid in large, bold, orange letters.

WE SELL WHAT CITIES LOVE

**CZECHIA, USA, FRANCE.
PARKS, PLAYGROUNDS, STREETS.
ALMOST THE WHOLE WORLD,
WHEREVER YOU CAN IMAGINE.**

Our projects speak for themselves—small or large, recent or decades old. Many of them installed within the last two decades. We strive for high-quality service and a personalized approach to every one of them.



IDEAS AND VISIONS

PULLING TOGETHER AND NEVER LOOSING DIRECTION.

Public space is a fascinating place,
where people and history meet.
We're proud to direct our design
here, influencing the taste of
people without distinction.
Good design isn't for a gallery—it's
for life.

NOVELTIES

LINFA

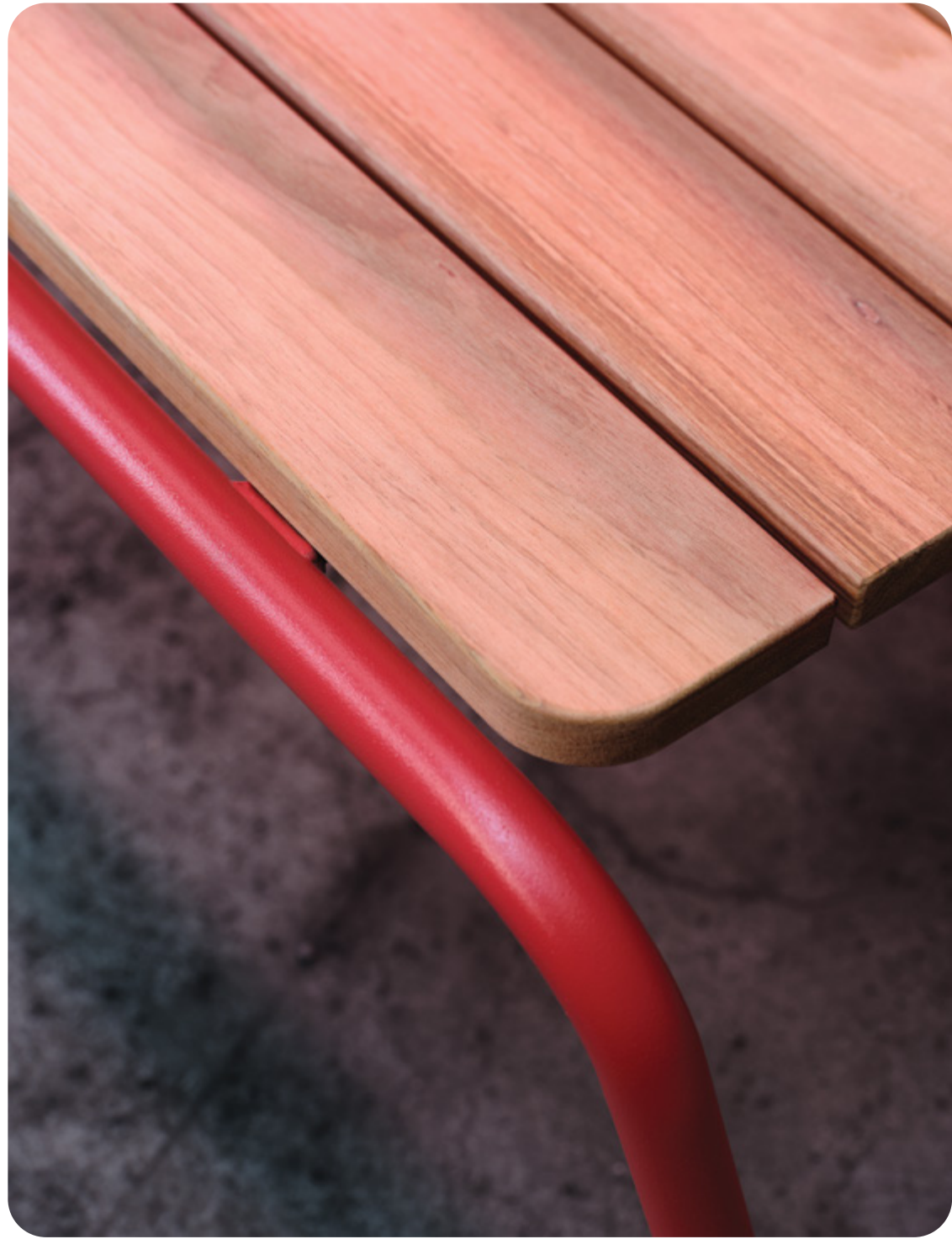
VISUALLY LIGHT, EXCEPTIONALLY STRONG

Is it more than just a silhouette? A curve traced with fine chalk?
A delicate line within a public space? Linfa is a minimalist
bench that defies its visual lightness with remarkable stability
and strength. Whether making a statement in urban squares,
harmonizing with the natural beauty of a blooming park, multiplied
at a train station, or standing alone in a library,
Linfa effortlessly adapts to any setting.

Design: AG&P greenscape, Cattaneo design







FLANEUR

IN THE STREET, LIKE AT HOME

Simple and subtle, as if Jean Marais were about to enjoy his favorite cocktail on it. Yet the design is incredibly strong and durable. It proudly reveals its origin: the street. The cohesive Flaneur outdoor furniture collection is a response to the changing character of public space. To its newfound relaxation, trust, increased safety, and the growing tendency to feel at ease in it, as if in the privacy of one's own garden.

Chairs, bar stools, and tables from the Flaneur collection can be easily moved within a park, café, or restaurant. If needed, they can be stacked with ease.

Design: David Karásek, Jitka Trčková







AVIELA

FOR EVERY PLACE, SUSTAINABLY, FOREVER.

Aviela takes the comfort and cost-effectiveness of urban benches to a new level. Its clean, linear design forms a minimalist whole that captivates with thoughtful details, despite its simplicity. Identical side frames made from slender, bent steel strips connect seamlessly with sturdy legs of the same material. These also serve as armrests, providing both strength and comfort when getting up and sitting down. The side frames are the key to both the bench's economic efficiency and structural integrity. Wooden boards—easily replaceable—on the seat and backrest soften the overall appearance and enhance both visual appeal and user comfort. Available in three lengths, Aviela offers flexible solutions for a wide range of public spaces.

Design: David Karásek, Viktor Šašínska





SEDAN

FROM CONVENTIONAL MODULES TO UNCONVENTIONAL COMPOSITIONS

The extensive Sedan collection fulfills your deepest desires for public spaces. Conventional modules from the Sedan, Sedan Solo, and Sedan Combo ranges combine to create unique compositions. They follow straight streets as well as the organic shapes of parks. The core element of the system is a seat with a backrest, which is derived from the cultivation island product, Platform. Linear, straight, and curved units come together to form long patterns, resulting in a seating collection with countless possibilities.

Design: David Karásek, Michael Tomalik



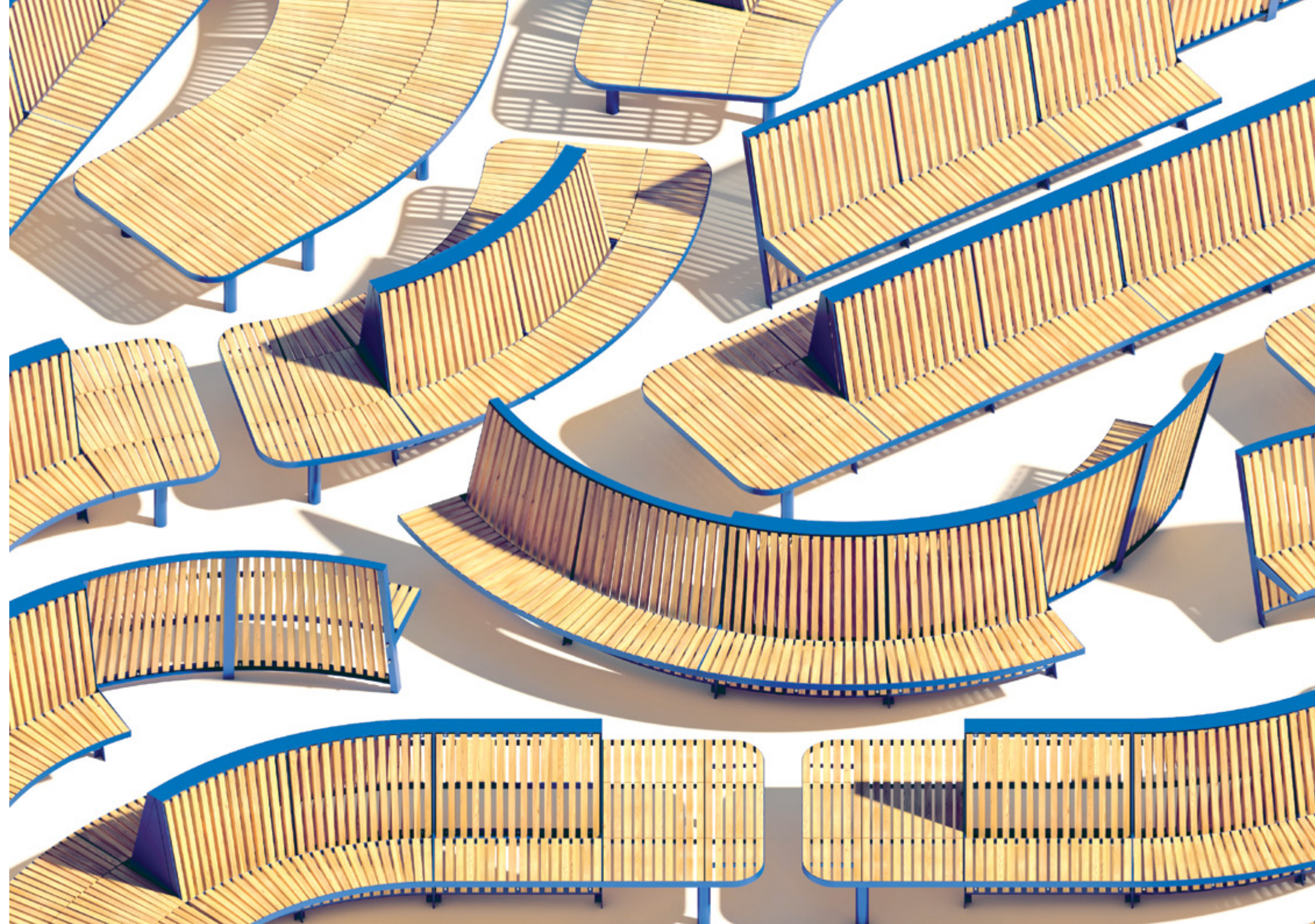


SEDAN COMBO

SOLITARY ISLANDS OF SEATING

Four basic double-sided units – straight, curved, with or without backrests. Four islands designed for public and semi-public spaces. For rest or quick encounters in the city. Sedan Combo can be complemented with linear elements from the Sedan and Sedan Solo collections, allowing for the creation of desired shapes and configurations within this self-contained series.

Design: David Karásek, Michael Tomalik





SEDAN SOLO

SUBTLE, BUT CERTAINLY NOT DULL

Sedan Solo is stripped of a backrest and presents a pure form of seating. Another linear element of the Sedan collection can be combined into unconventional compositions. Through repetition, it creates a line with a rounded end, a kind of harbour for play and relaxation in urban environments. Sedan Solo can also be complemented with backrest segments from the Sedan series.

Design: David Karásek, Michael Tomalik





NANUK NEXT

A NEW GENERATION OF ORDER IN CITIES

Nanuk Next is the new generation of Nanuk trash bins. Streamlined production has led to a more affordable price and a fresh, contemporary design. Gentle radii soften the shape, while the cross-anchored base complements the proportions of the product. The slanted top prevents unwanted items from being placed on it, while also making it easier to handle and empty the durable plastic container. By combining multiple units, Nanuk Next becomes the ideal solution for public waste sorting. Available with or without a lockable raincover.

Design: David Karásek, Iveta Krmíčková





SKYLINE

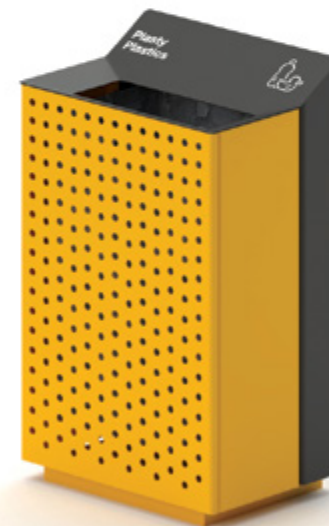
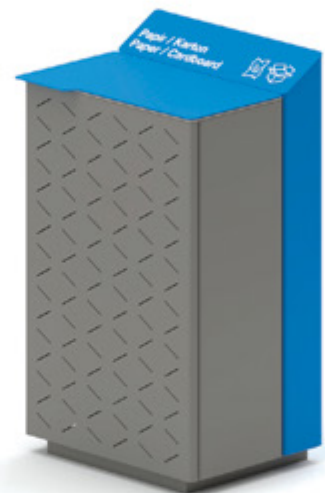
FOR TIDINESS IN HIGH-TRAFFIC AREAS

The 160-litre Skyline bin offers high-capacity waste collection in a sleek, functional design. Its overall volume is divided into two sections. The taller rear portion features a sloped canopy, ideal for pictograms and multilingual labelling. The front, lower section includes either an opening for fast disposal or a tilting lid that securely closes the contents inside.

The bin is available in two material options: wood or sheet metal. The metal version can be plain (with an optional logo), perforated, or enhanced with decorative line patterns. This segmented design allows for various colour options—whether to match city or campus branding, or to support colour-coded waste sorting. When installed in groups, the bins provide an ideal solution for sustainable waste management in urban environments.

Design: David Karásek, Viktor Šašínska





TOPPA

GUARDIAN OF URBAN GREENERY

A traditional element of urban design—the walkable tree grate—features a decorative, almost ornamental geometric structure. The looser composition is set within a regular grid. Identical quarters in larger grates and halves in smaller ones form units that protect root systems in urban environments. Cast iron grates come in square and circular shapes, naturally aging without the need for additional treatment, or are finished with powder coating. The grates are safe for everyone—cyclists and strollers alike. Toppa fits both historic piazzettas and modern architectural districts.

Design: David Karásek, Viktor Šašínska





OCUS

BORN FOR CYCLING CULTURE

The Ocus bike stand flows naturally through its environment—just like the movement of the cyclists who inspired it. This minimalist stand, defined by its pure form, is made from a continuous bent steel tube. Its smooth curves and absence of sharp edges offer not only visual elegance but also enhanced safety. The intuitive bike insertion method ensures secure and reliable support for all two-wheeled vehicles in urban settings.

Design: David Karásek, Iveta Krmíčková



CUBY LOCK

STORE YOUR BELONGINGS—JUST LIKE

Cuby Lock is a lockable unit with an overhanging roof for convenient use even in adverse weather conditions. It can easily be transformed into a shelter for bicycles, prams, or garden tools. Available in three sizes—comprising one, two, or three modules—it provides a generous and secure space for a variety of storage needs. The system is equipped as standard with interior lighting and an electric lock operated by a numerical code or chip. This lock can also be replaced by your company's or residential building's access system for maximum convenience. There are three roof options: ACP composite panels, photovoltaic panels, or a green roof system. The side walls are available in three versions: stretched metal sheet, wooden slats, or a combination of both. The unit can either utilise the existing surface on site or be supplied with its own floor.

Design: David Karásek, Jitka Trčková



REFERENCES



BUDAPEST HUNGARY

NANUK



ABU DHABI UAE

RIVAGE











NEW YORK NY, USA

RIVAGE



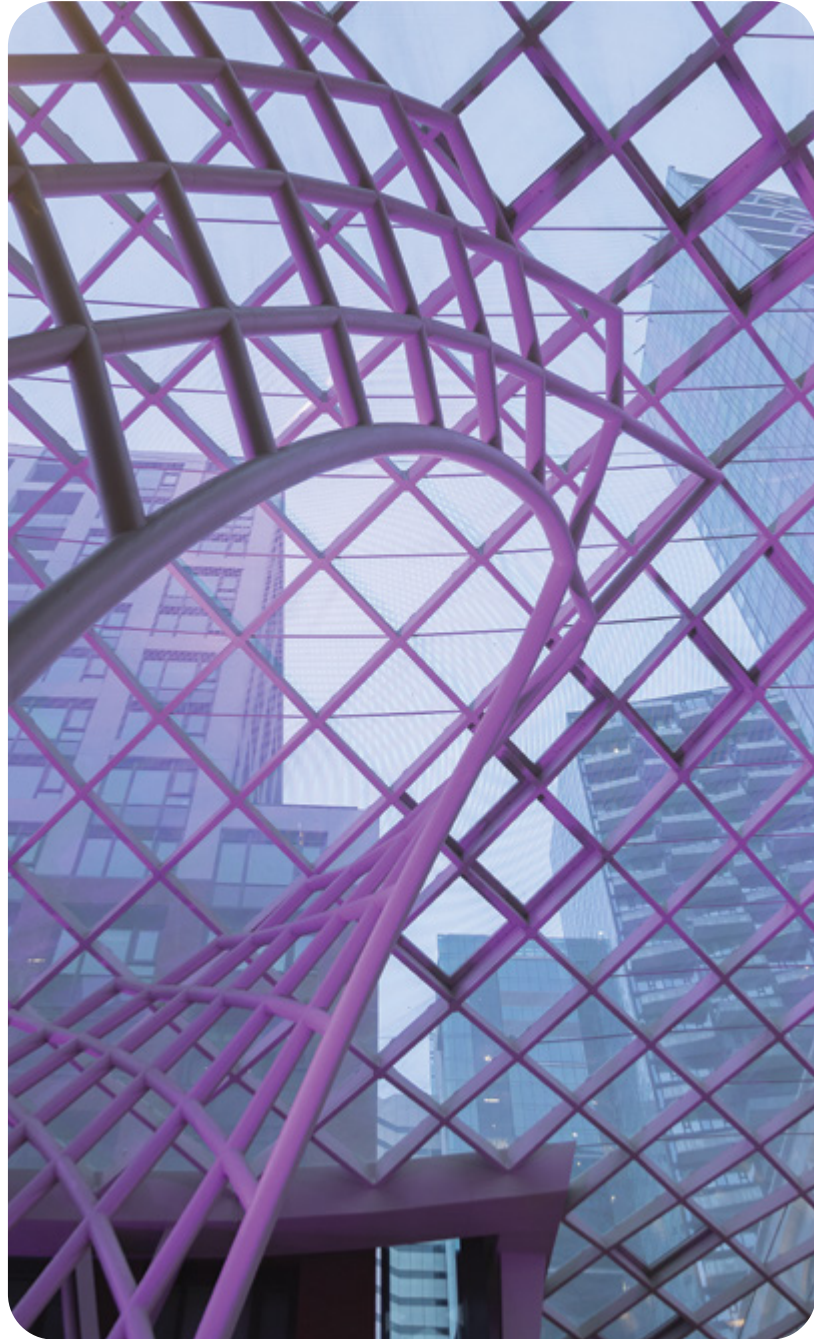
LIVERPOOL UNITED KINGDOM

WOODY SCORPIO









LETY U PÍSKU CZECHIA

PREVA URBANA



BORLÄNGE SWEDEN

VERA SOLO







PHILADELPHIA PA, USA

WOODY SOLAR



PUŁAWY POLAND

LIMPIDO





NEW YORK NY, USA

BLOCQ



BRATISLAVA SLOVAKIA

LANDSCAPE COMPACT





SANTA CASA BRAZIL

STACK



PARIS FRANCE

EDGE













MATERIALS



**OUR STANDARDS FOR
SUSTAINABILITY HAVE ALWAYS
BEEN THE HIGHEST, SINCE OUR
ESTABLISHMENT IN 1994.
WE RESPOND CRITICALLY AND
MEANINGFULLY TO EXISTING
ENVIRONMENTAL CHALLENGES.
OUR OWN INNOVATIONS AND
SOLUTIONS ARE PART OF OUR
COMPANY'S SUSTAINABILITY.
WE HAVE ALWAYS CARED
AND WE ALWAYS WILL.**



**TO MANUFACTURE OUR PRODUCTS,
WE USE MATERIALS FROM
RENEWABLE OR RECYCLABLE
SOURCES. THEY HAVE A NATURALLY
LONG LIFE AND HIGH RESISTANCE
TO ENVIRONMENTAL CONDITIONS.**



STEEL

**STEEL IS THE BASIC MATERIAL FOR
THE MAJORITY OF OUR PRODUCTS
AND IS ALWAYS PROTECTED BY ZINC
COATING.**



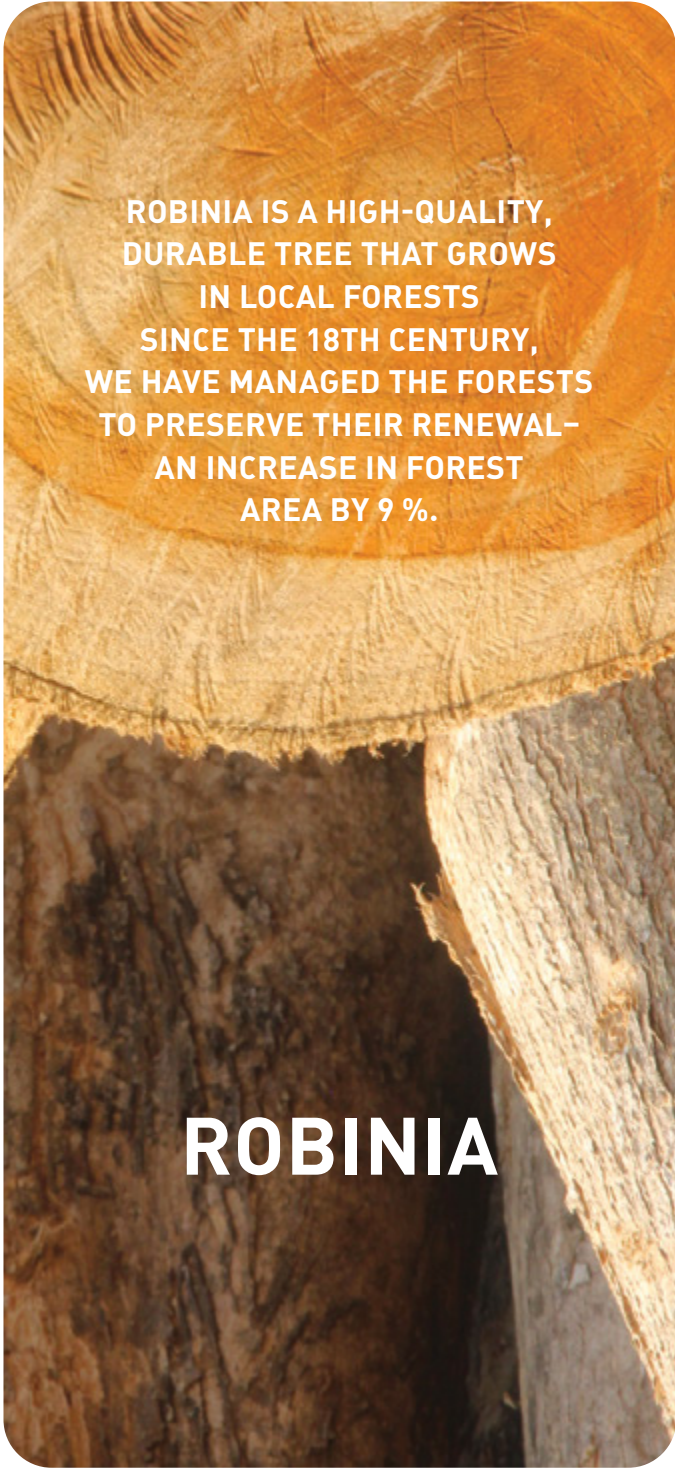
ALUMINIUM

**ALUMINIUM HAS NO NEGATIVE
EFFECTS ON LIVING ORGANISMS
AND IS EASILY RECYCLABLE.
PRODUCTION HAS A SIGNIFICANTLY
LOWER ENVIRONMENTAL IMPACT
THAN PRODUCTION FROM
COMPARABLE MATERIALS.**



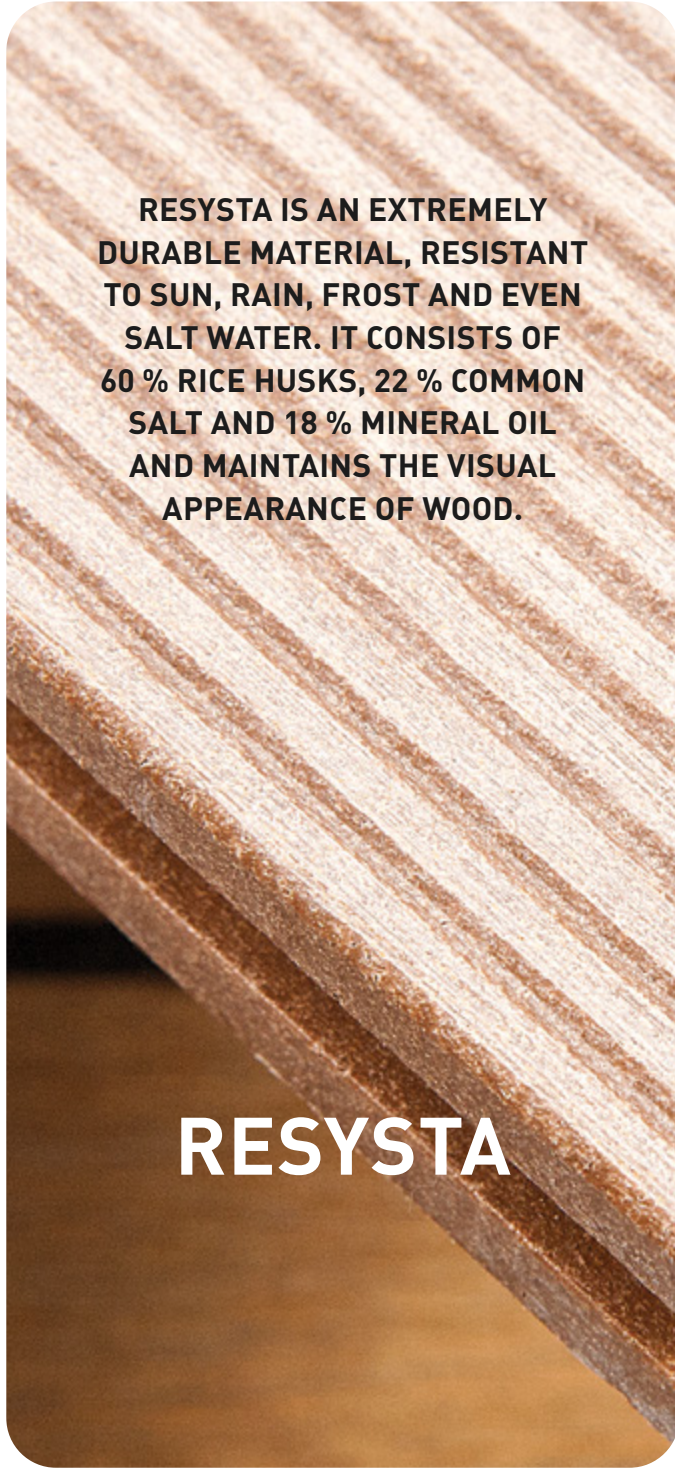
JATOBA

**JATOBA HAS IDEAL PROPERTIES
FOR USE IN THE PRODUCTION
OF STREET FURNITURE. IT IS
WEATHER RESISTANT AND HAS
A LONG SERVICE LIFE. STRICTLY
CONTROLLED HARVESTING
OF WOOD IN THE FORM OF
THE NECESSARY FELLING OF
FORESTS. WE USE JATOBA
THAT HAS BEEN LEGALLY
HARVESTED WITH FSC® C167403
CERTIFICATION.**



ROBINIA IS A HIGH-QUALITY,
DURABLE TREE THAT GROWS
IN LOCAL FORESTS
SINCE THE 18TH CENTURY,
WE HAVE MANAGED THE FORESTS
TO PRESERVE THEIR RENEWAL—
AN INCREASE IN FOREST
AREA BY 9 %.

ROBINIA



RESYSTA IS AN EXTREMELY
DURABLE MATERIAL, RESISTANT
TO SUN, RAIN, FROST AND EVEN
SALT WATER. IT CONSISTS OF
60 % RICE HUSKS, 22 % COMMON
SALT AND 18 % MINERAL OIL
AND MAINTAINS THE VISUAL
APPEARANCE OF WOOD.

RESYSTA



LESS PLASTIC. LESS CARBON
IMPACT. FEWER POLLUTED
STREETS. FEWER INCINERATED
MATERIALS. NEW MATERIAL
CALLED MÍNUS TRANSFORMS
DISCARDED FISHING NETS,
KEYBOARDS, AND TELEVISIONS
INTO HIGH-PERFORMANCE, FULLY
RECYCLABLE PANELS DESIGNED
FOR PUBLIC SPACES.

MÍNUS



**WE HAVE ALWAYS CARED.
WE ALWAYS WILL.**

PRODUCTS

* CUBY



* CUBY SCREEN



DEPOT



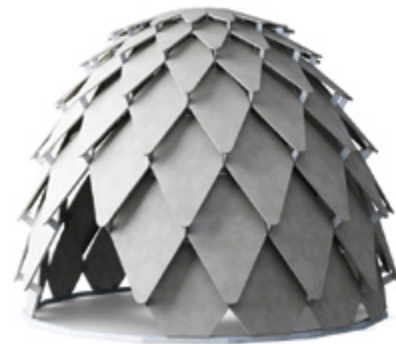
* AUREO VELO



* EDGE



** PINECONE



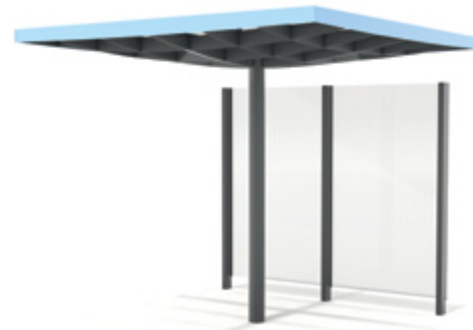
* UFO



* PIN



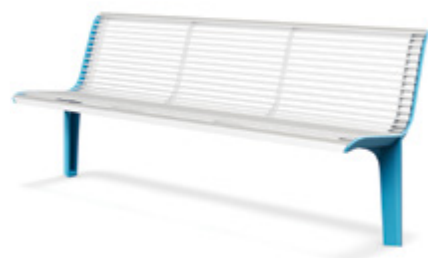
PINSCREEN



EMAU



EMAU SOLO



MORSE



* AUREO



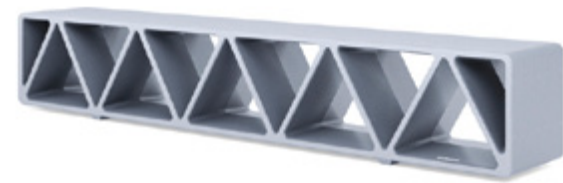
* GEOMERE



NUBO



CONSTRUQTA



MIELA



PREVA URBANA



* Not available in the standard version in the USA and Canada
** Not available in the USA and Canada

SEDAN



SEDAN COMBO



LAGO



AVIELA



BLOCQ



EBLOCQ



MANTA



SEDAN SOLO



PIXEL



ORBIT



CONICS



SATELLITE



LIMPIDO



INTERVERA



WOODY



WOODY
SCORPIO



WOODY
SOLAR



RADIUM



LANDSCAPE
COMPACT



VERA



VERA SOLO



VLTAU



PORTIQ0A



PORT



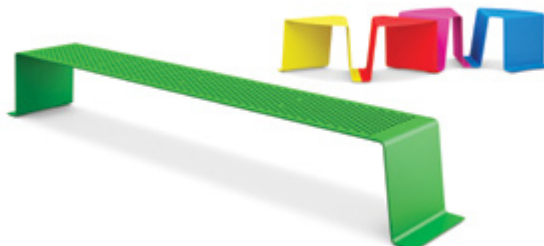
BISTROT



LINFA



SINUS



FLANEUR



RIVAGE



** BOHÉM
**



REFORMA



*** Not available in Brazil and Mexico

TABLY



VERA



VERA SOLO



QUINBIN



RADIUM



SWISSBIN



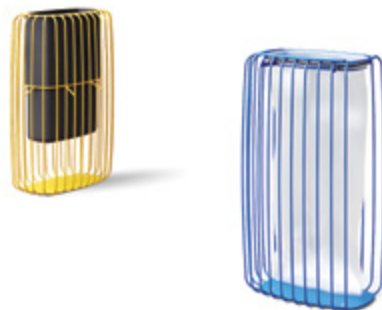
STACK



RAUTSTER



TLESK



BETTER



SKYLINE



MINIUM



MULTIMIUM



MAXIMIUM



NANUK



NANUK NEXT



CRYSTAL



OCUS



ELK



VELO



BIKEPARK



BIKEBLOCQ



EDGEITYRE



TROT



PRAX



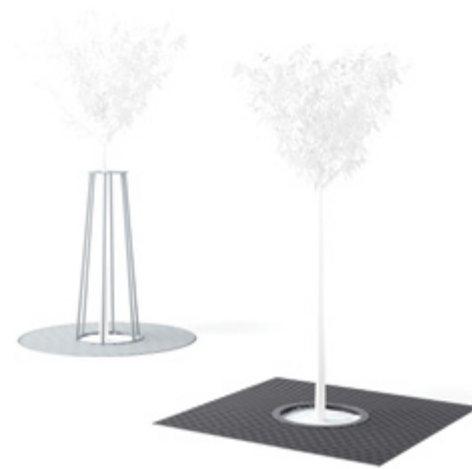
GOMEZ



LOTLIMIT



ARBOTTURA



DONAT



SANIT



SINUS



ELIAS



CYDLIMIT



MIELON



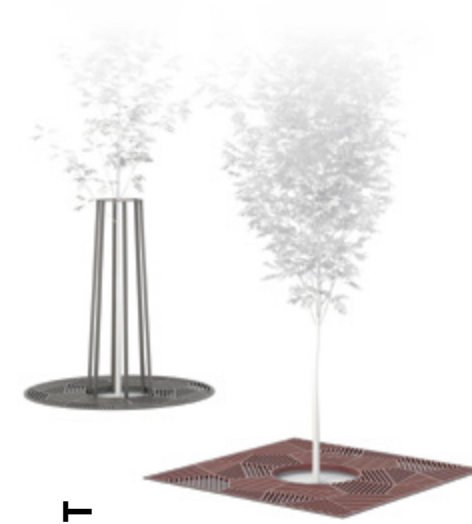
ISAC



LOTLIMIT



TOPPA



LOT



FLORIUM



MALAGENO



POLYS



** EGERO



* CLIG



POSTERION



TYP0



KVĚTA



OS



* C-LIGHT IF



FONS



* HYDRO



* Not available in the standard version in the USA and Canada
** Not available in the USA and Canada

KOVOSTAL



**EVERY SEAT TELLS
A HUMAN STORY**

●●kovostal



**WE DESIGN, MANUFACTURE,
INSTALL**

**WE LISTEN TO WORLD-CLASS
ORCHESTRAS AND CHEER FOR
SPORTS CLUBS SINCE 1991.**

Since 2023, Kovostal has been part of the mmcit  group, which also operates in the field of public space. Through small elements such as benches, litter bins, or bus stops, we are changing the face of cities worldwide. Together, we remind ourselves that good design belongs not in a gallery but in life.



SPORT

OUTDOOR AND INDOOR SEATING
FOR STADIUMS AND ARENAS



CULTURE

UPHOLSTERED COMFORTABLE SEATS
FOR THEATERS, CONCERT HALLS,
AND CINEMAS



EDUCATION

SEATS WITH INTEGRATED TABLES FOR
SCHOOLS AND EDUCATIONAL INSTITUTIONS



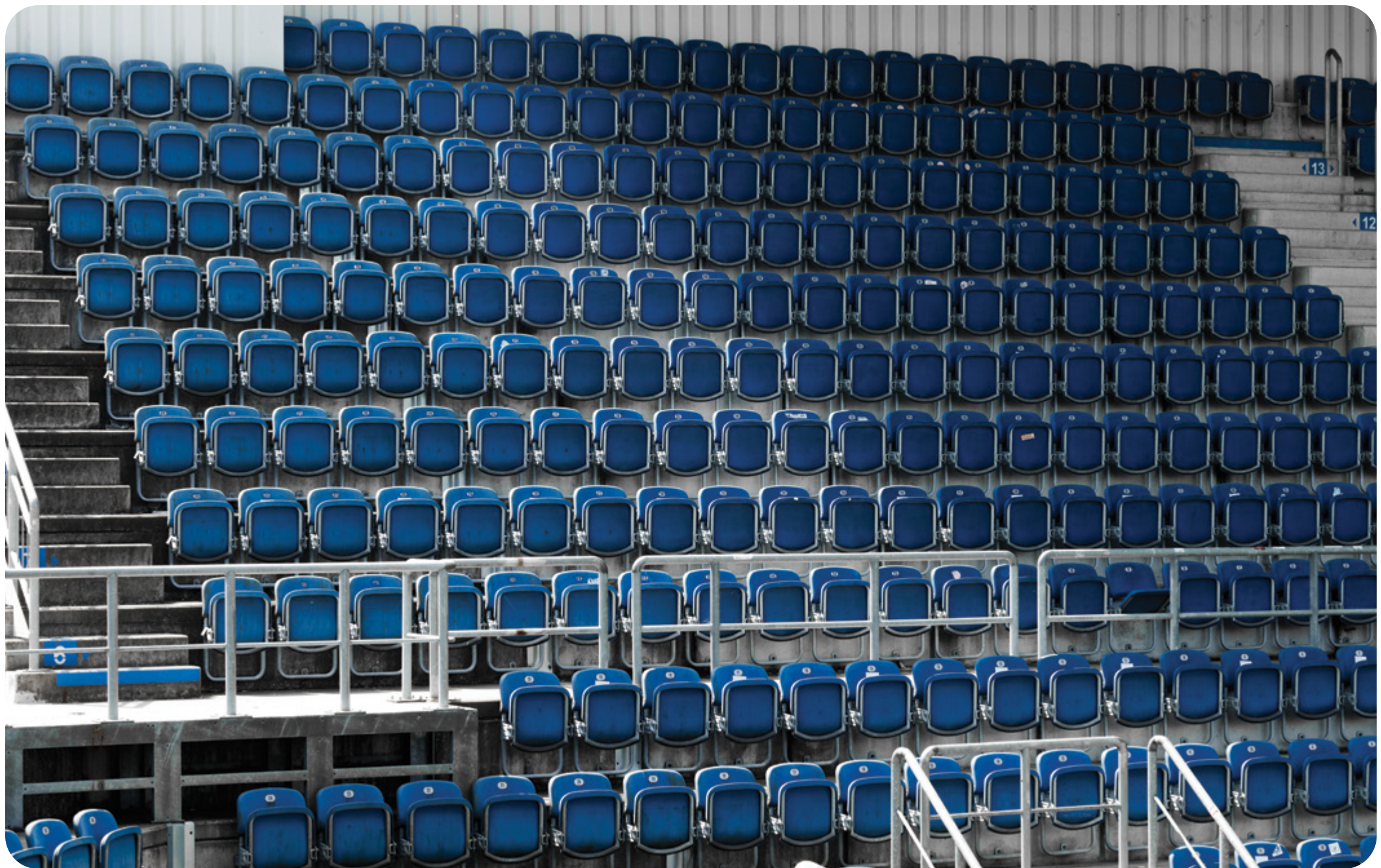
TRIBUNES

TELESCOPIC AND FOLDING
TRIBUNES

FC REDBULL SALZBURG AUSTRIA



1. FC SLOVÁCKO UHERSKÉ HRADIŠTĚ



KKH MALMÖ SWEDEN



PRAHA CONSERVATOIRE CZECHIA





**GOOD DESIGN
ISN'T FOR A GALLERY —
IT'S FOR LIFE.**





mmcité a.s.
Vinohradská 907, Mařatice
686 05 Uherské Hradiště
Czechia
sales@mmcite.cz
www.mmcite.com